

just for  
**Kids**  
Power Toothbrush



User  
Manual

DentistRx<sup>®</sup>  
better health starts here<sup>®</sup>

# IMPORTANT SAFEGUARDS

Please read the safety instructions before using this product. The safety instructions provided here are to help you use this product safely and correctly, and also to prevent you from injuring yourself or others.

When using electrical products, especially when children are present, basic safety precautions should always be followed, including the following:

## READ ALL INSTRUCTIONS BEFORE USING

### WARNINGS

To reduce the risk of burns, fire or injury to persons:

- This product is not intended for use by persons with reduced physical, sensory or mental capabilities or lack of experience and knowledge, unless they have been given adequate supervision or instruction concerning use of the product by an adult responsible for their safety.
- Children should be supervised to ensure they do not play with the product.
- Use this product only for its intended use as described in this manual. This product is designed to clean your teeth, gums only. Do not use any attachments or brush heads other than those recommended by the manufacturer.
- The toothbrush is a personal care appliance and is not intended for use on multiple patients in a dental office or institution.
- If your toothpaste includes peroxide, baking soda or other bicarbonate (common in whitening toothpastes), thoroughly clean your brush head and handle to avoid cracking the plastic.
- Keep the product away from heated surfaces.
- If you experience discomfort or pain in your mouth, discontinue use of this product and contact a dentist.
- Do not clean the product in the dishwasher.
- Do not use outdoors or operate where aerosol (spray) products are being used or where oxygen is being administered.
- Never drop or insert any object into any opening.
- For household use, indoor use only.
- If long time don't use, please remove the batteries, so as not to cause danger or damage to the products such as batteries leakage.

### MEDICAL-WARNINGS

- If you have had oral surgery or gum surgery within the past two months, consult your dentist before using the product.
- Consult your dentist if excessive bleeding occurs while using this product or minor bleeding continues to occur after one week of use.
- Consult your physician or implant device manufacturer prior to using this product if you have questions concerning the combined use of this product with a pacemaker or other implanted medical device(s).
- Consult your physician prior to using the toothbrush if you have any medical concerns.

# Welcome to your DentistRx Kids Power Toothbrush

The Electric Toothbrush for Kids is designed for children more than 5 years old. It is not intended for adult use.

For children under age 8, dental professionals recommend that tooth brushing is supervised by a parent or adult caregiver.

Brush Head



Identification Ring

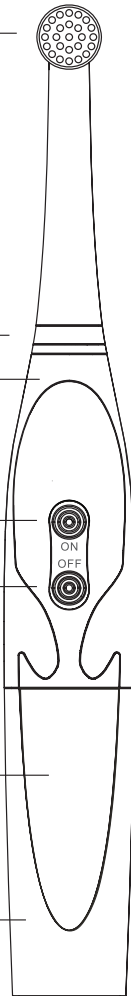
Handle

ON Button

OFF Button

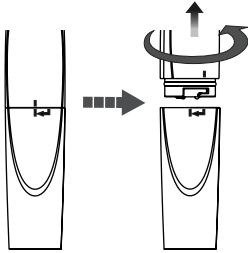
Panel

Batteries Box

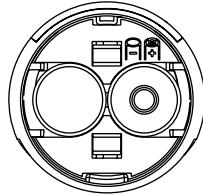


# GETTING STARTED

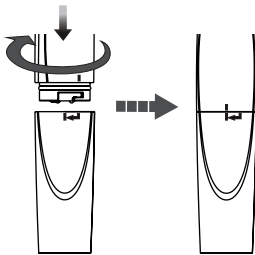
Install the batteries. (Fig.1)



1. Turn counter-clockwise and unscrew with the handle.



2. Install AAA batteries with indication mark "+", "-".



3. Turn clockwise to tighten the handle.



4. install complete.

Fig. 1

# HOW TO USE

1. Slide the brush head on the toothbrush according to the mark, insert it into the drive shaft catch and turn it clockwise, until it locks into place on handle. (Fig.2)

- The lock prevents the brush head from becoming detached due to vibration.

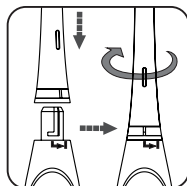


Fig.2

2. Put toothpaste on the brush head.

3. Place the brush head in your mouth.

4. Lightly press the on button to switch on the toothbrush. (Fig.3)

- Brush evenly throughout the mouth in four sections. (Fig.4)
  - 1. Outside upper
  - 2. Outside lower
  - 3. Inside upper
  - 4. Inside lower

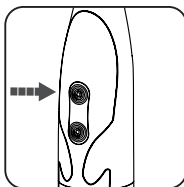


Fig.3

5. Guide the brush head slowly from tooth to tooth.

- Hold the brush head in place for a few seconds before moving on to the next tooth.
- Do not press too hard or scrub, simply let the brush do all the work.

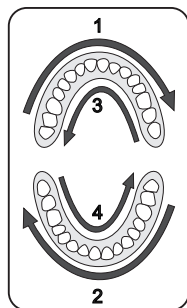


Fig.4

6 During brushing, lightly press off button to terminate a brush. (Fig.5)

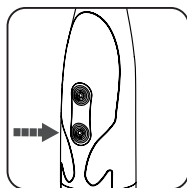


Fig.5

## NOTE:

- A brushing time of 2 minutes is generally long enough to clean your teeth properly. If you want, you can brush longer than 2 minutes for an even more thorough clean.
- When you first use your electric toothbrush you may experience slight bleeding. This should stop after a few days when your gums get used to the toothbrush. If the bleeding persists, please consult your dentist.

# HOW TO USE

1. Turn the brush head counter-clockwise, remove the toothbrush head from toothbrush handle. (Fig.6)
2. Turn on the toothbrush and rinse the drive shaft under the tap to remove toothpaste residues. (Fig.7)
3. Turn off the toothbrush, detach the brush head and rinse the inside of the brush head (max.140F). (Fig.8)
4. Turn on the toothbrush and rinse the brush head under a tap. (Fig.9)
5. Toothbrush head put back on the handle. (Fig.2)
6. Clean the toothbrush with a soft moist cloth or paper towel. (Fig.10)

If the toothbrush is not used for 4 weeks or longer, you should remove the batteries, and place the product into the packaging box.

## NOTE:

- Replace the brush head every 3 months for the best brushing results.
- Also replace the brush head when the bristles start to bend outwards.
- Any other servicing should be performed by an authorized service representative. The product has no user serviceable parts.
- Do not mix old and new batteries.
- Do not mix different types of batteries.

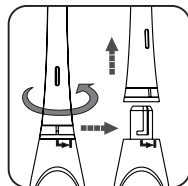


Fig.6

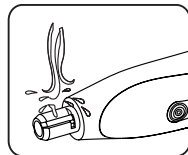


Fig.7



Fig.8

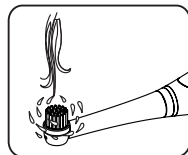


Fig.9

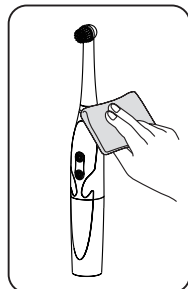


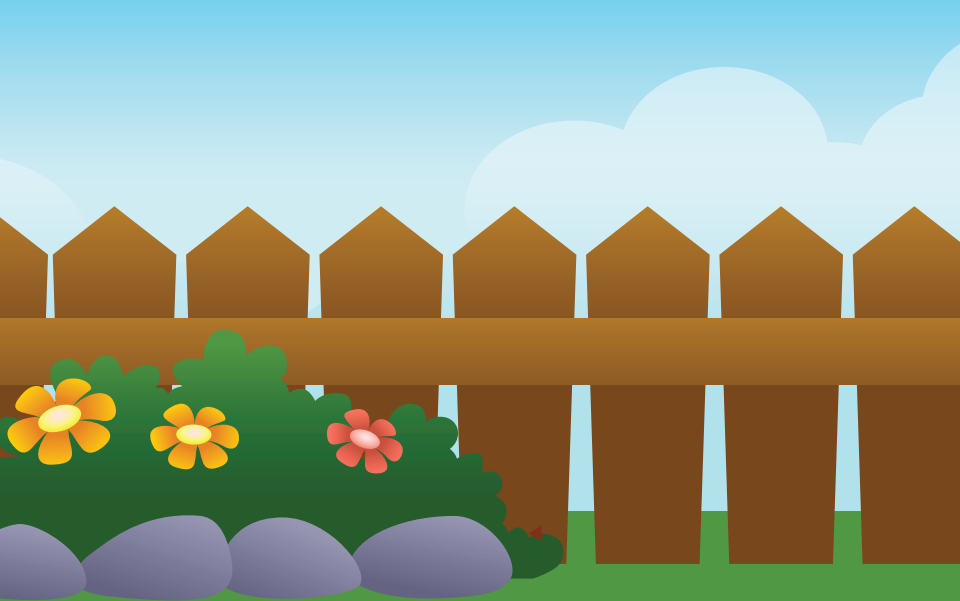
Fig.10

## TROUBLESHOOTING

Problem	Possible Cause	Solution
The toothbrush doesn't work	No batteries inserted	Insert batteries in the unit
	The batteries in wrong direction	Re-insert batteries in correct direction
	The batteries are exhausted	Replace with new batteries
Weak or diminished oscillations	The toothbrush is pressed hard against your teeth	Place the brush head gently against your teeth letting the brush do the work



Model: RST2207



# DentistRx<sup>®</sup>

better health starts here<sup>®</sup>

4400 118th Avenue North, Suite 106  
Clearwater, FL 33762

(877-71-SONIC (877-717-6642)

[www.dentistrx.com](http://www.dentistrx.com)